

ESTABLISHED 1880

RAMOS PINTO

10-YEAR OLD TAWNY PORT

91 points “Pretty, with sandalwood, warm raisin and toffee hints weaving around a core of gently mulled cherry and plum fruit flavors. The sandalwood edge extends through the stylish finish.”

Wine Spectator | 12.18

Wine Spectator

91 pts.



QUINTA DE ERVAMOIRA

ESTABLISHED 1880

RAMOS PINTO

20-YEAR OLD TAWNY PORT

94 points “Aged into a dark, rich wine at the cusp of maturity, the fruit still bristles with energy...The flavors last, with a spicy zing of acidity deliciously integrated into the fruit. Classical.” Wine & Spirits | 12.18

Wine & Spirits

94

pts.



QUINTA DO BOM RETIRO

ESTABLISHED 1880

RAMOS PINTO

30-YEAR OLD TAWNY PORT

94 points “Harmonious and refined, lively and fresh, its ‘old Tawny’ flavors eventually come crashing onto its finish, but it always seems youthful and pure. ... This is very graceful.”

The Wine Advocate | 2.28.18



Robert Parker
WINE ADVOCATE

94 pts.

DOURO, PORTUGAL

ESTABLISHED 1880

RAMOS PINTO

LATE BOTTLED VINTAGE 2013

92 points “It shows beautiful structure now, real but controlled tannins.

...This should develop more over the next 5-10 years and hold for another decade or more beyond that, without problem. This is another fine LBV from Ramos Pinto.”

The Wine Advocate | 4.27.18

Robert Parker
WINE ADVOCATE

92

pts.



Douro, Portugal

ESTABLISHED 1880

RAMOS PINTO

QUINTA DE ERVAMOIRA VINTAGE 2009

92 points “A supremely ripe Port from Ramos-Pinto’s vineyard in the far east of the Douro. It is finely perfumed, with layered tannins upon structured plum skins and black cherry fruit. It’s in a fruity style, but the structure certainly promises aging.”

Wine Enthusiast | 4.1.17

WINEENTHUSIAST

92

pts.



Douro, Portugal

ESTABLISHED 1880

RAMOS PINTO

VINTAGE PORT 2015

94 points “It looks like a fine 2015, showing plenty of power as it tightens and gets harder in the glass, plus very flavorful fruit. ...focused and precise, bright and fresh, with that fine structure.”

Wine Advocate | 8.31.17

94 pts.

Robert Parker
WINE ADVOCATE



Douro, Portugal

ESTABLISHED 1880

RAMOS PINTO

TAWNY PORT non-vintage

Light, warm and very soft
as a result of its aging.

This Port is mature and
fruity, with a complex and
delicate character. Its
finish is perfectly
balanced, giving it some
delicateness.



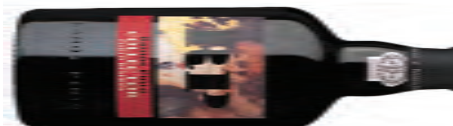
DOURO, PORTUGAL

ESTABLISHED 1880

RAMOS PINTO

COLLECTOR RESERVA

A five-year-old port created from several young blends, this wine retains its delicate fruity aromas while gaining the patina and roundness of age. Collector Reserva gives enthusiasts the opportunity to experience a quality wine without ageing it for years.



Douro, Portugal

ESTABLISHED 1880

RAMOS PINTO

LÁGRIMA non-vintage

This white port has a light, unctuous palate with flavors of ripe fruit surrounded by an intense freshness. It pairs beautifully with salted nuts, pâté, fish-based salads, as well as a variety of desserts.



Douro, Portugal

ESTABLISHED 1880

RAMOS PINTO

RUBY PORT **non-vintage**

Lively and intense, with strong, fruity aromas (primarily cherry, blackberry, plum and raspberry, with a hint of cinnamon). It has a rather voluminous attack because of its exuberance and amount of fruitiness.

The classic pairing with ruby port is blue cheese. Also goes great with chocolate desserts.



Douro, Portugal

ESTABLISHED 1880

RAMOS PINTO

WHITE PORT non-vintage

With its delicate yet intense aromas, this is a wonderful aperitif.

Somewhat complex, it features a mixture of citrine aromas with a hint of honey and almond. It is dry with a flavor of fresh fruit.

Smoked salmon, sushi, olives, and charcuterie are just a few types of food you'll enjoy with this wine.



Douro, Portugal